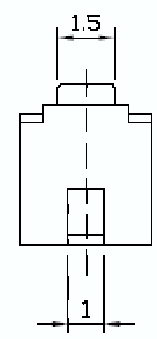
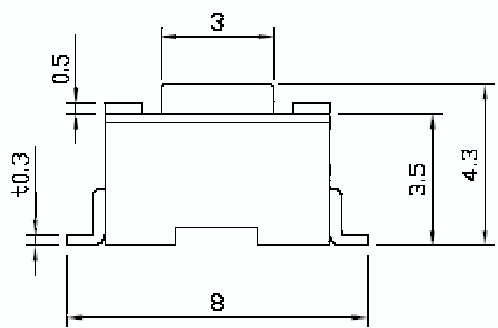
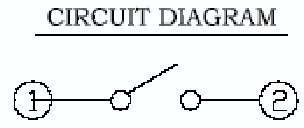
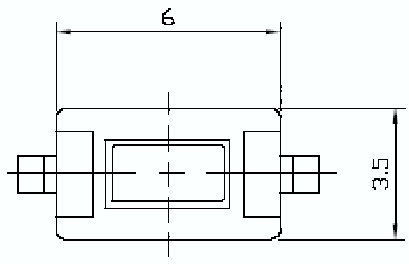
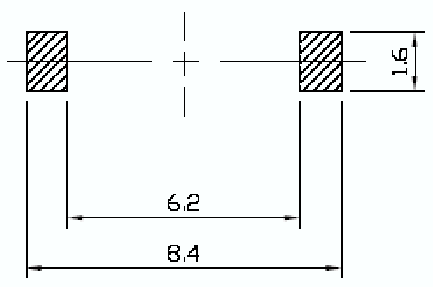


MODEL No	L (mm)
1101NE	4.3
1101NEA	5.0



P.C.B LAND PATTERN



SPECIFICATIONS

1. RATING : DC 12V, 50mA Max
2. CIRCUIT : 1C - 1P
3. OPERATING FORCE : 130, 180 ± 30gf
or 250 ± 50gf
4. CONTACT RESISTANCE : 100m Ω Max
5. TRAVEL : 0.25 ± 0.1mm
6. LIFE : 50,000Cycles Min FOR 160, 180gf
30,000Cycles Min FOR 250gf
7. TOLERANCE : ± 0.3mm

△				APPROVAL	CHECK	DESIGN	TITLE	TACT SWITCH
△							MODEL	KPT-1101NE
△							SPEC NO	HTS-S-12
MARK	DATE	REVISIONS	SIGN					